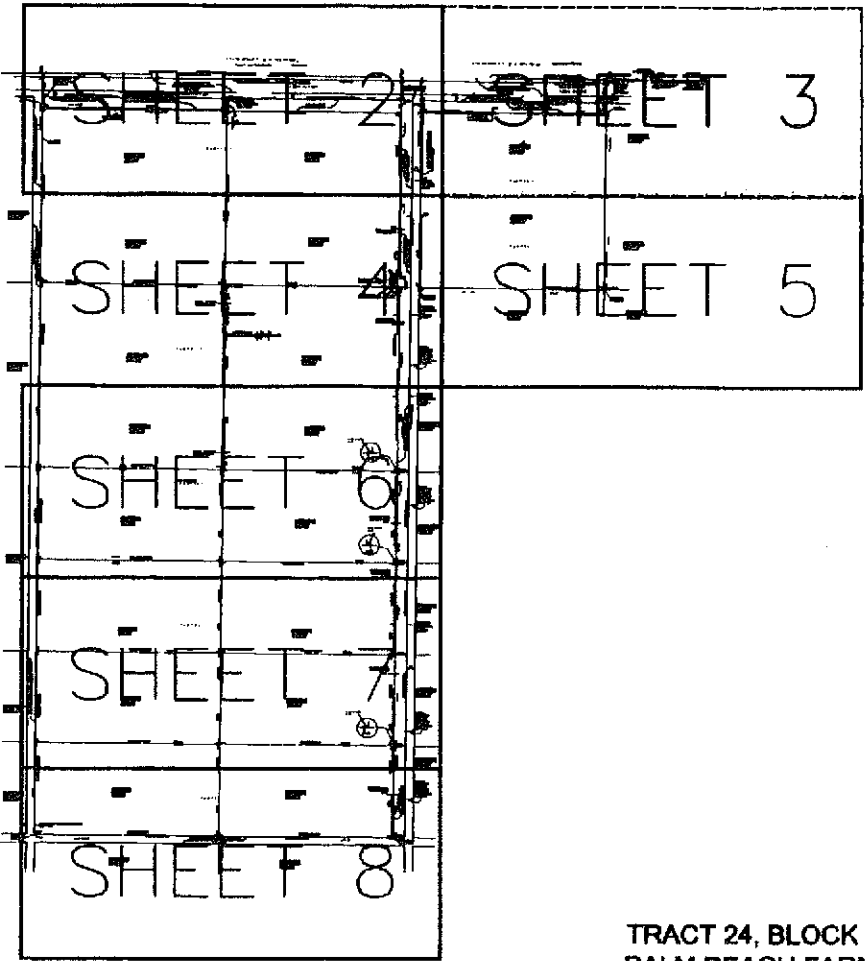


FAITH FARM MINISTRIES BOYNTON BEACH CAMPUS

A PORTION OF TRACTS 45, AND 67 THROUGH 78, BLOCK 51, PALM BEACH FARMS COMPANY, PLAT No. 3, PLAT BOOK 2, PAGE 45, PUBLIC RECORDS OF PALM BEACH COUNTY, FLORIDA.
BEING IN SECTION 19, TOWNSHIP 45 SOUTH, RANGE 42 EAST, PALM BEACH COUNTY FLORIDA
MARCH 2009

SHEET 3 OF 8



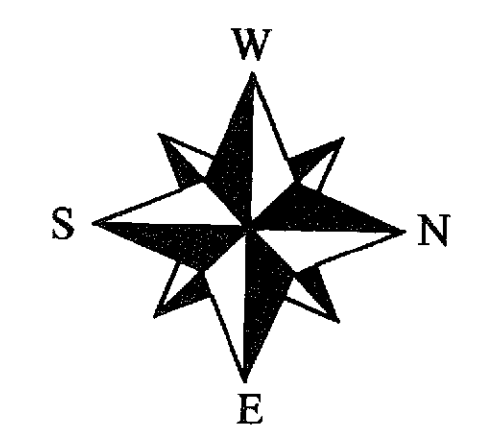
59

STATE OF FLORIDA
COUNTY OF PALM BEACH

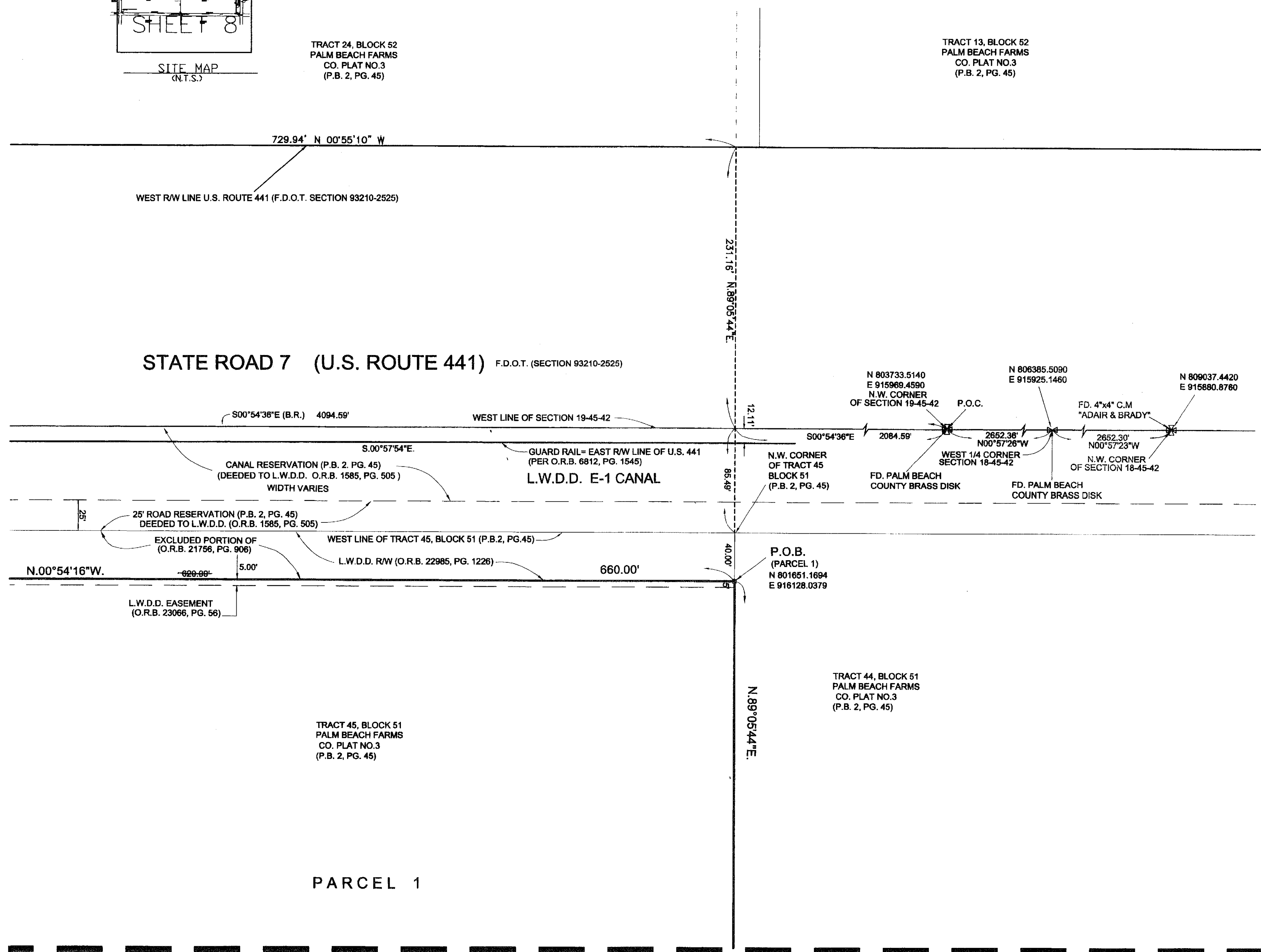
THIS PLAT WAS FILED FOR RECORD AT _____ M. THIS _____ DAY OF _____ 2009 AND DULY RECORDED IN PLAT BOOK No. _____ ON PAGES _____ THROUGH _____

SHARON R. BOCK
CLERK & COMPTROLLER - PALM BEACH COUNTY

BY: _____
D.C.



MATCH LINE (SEE SHEET 2 FOR CONTINUATION)



TRACT 45, BLOCK 51
PALM BEACH FARMS
CO. PLAT NO. 3
(P.B. 2, PG. 45)

PARCEL 1

MATCH LINE (SEE SHEET 5 FOR CONTINUATION)

SCALE 1" = 50'	MILLER LAND SURVEYING	REFERENCES BB 14-67
DR. EVANS	1121 LAKE AVE. LAKE WORTH, FLORIDA 33460	JOB NO. Y070423-PLAT
FIELD M.M.	PHONE: (561) 586-2800 FAX: (561) 582-0151 www.MillerSurveying.com	L-1705-A
DATE MARCH 2009		